



St Monica's RC High School

Child Protection and Safeguarding Policy Framework

Start Date	September 2020
Renewal Date	September 2021

Mission Statement

St. Monica's is a Catholic community working in partnership with families, schools and parishes to teach the Catholic faith as a way of life. We provide a caring, supportive environment where everyone is of equal worth. Jesus Christ is central to our school and our main aim is that everyone can develop their God given talents and gifts to the full, while growing in faith through prayer and service.

The Safeguarding Team

The designated person for Safeguarding (DSL) is Mrs E Keenan.
Deputy DSL's are: Mrs J Davies, Mr M Kehoe, Mrs J McManus, Mr P Noon

Contents

1. Ethos statement	3
2. Introduction	3
3. Aims	3
4. Statutory framework	4
Key roles and responsibilities	4
LGB	4
Designated Safeguarding Lead (DSL)	4
Headteacher	5
All staff involved in recruiting staff or volunteers	5
All staff	5
5. Training	6
6. All new staff	6
7. Recognising concerns - signs and indicators of abuse	6
8. Specific safeguarding issues	7
9. Peer on peer abuse	8
10. Online safety	8
11. Curriculum	9
12. Procedures	9
13. What to do if you are concerned.	9
14. Information sharing, record keeping and confidentiality	10
15. Managing allegations made against members of staff or volunteers	11
16. Whistleblowing	11
17. Local Safeguarding Partnership Arrangements	11
Appendix A	13
Children with special educational needs and disabilities	13
The use of reasonable force in schools and colleges	13
Children missing from education	13
Child sexual exploitation	13
Child criminal exploitation: county lines	14
Domestic abuse	14
So-called 'honour-based' violence	15
Actions	15
FGM.....	15
FGM mandatory reporting duty for teachers	16
Forced marriage	16
Preventing radicalisation	16
The Prevent duty	17
Additional support	17
Channel	18
Serious Violence	18
Peer on peer abuse	18
Sexual violence and sexual harassment between children in schools and colleges	18
What is sexual violence and sexual harassment?	19
What is consent?	19
Sexual harassment	19
The response to a report of sexual violence or sexual harassment	20

1. Ethos statement

We recognise the moral and statutory responsibility placed on all staff to safeguard and promote the welfare of all children. We aim to provide a safe and welcoming environment, underpinned by a culture of openness where both children and adults feel secure, are able to raise concerns and believe they are being listened to, and that appropriate action will be taken to keep them safe.

2. Introduction

Safeguarding and promoting the welfare of children is **everyone's** responsibility. **Everyone** who comes into contact with children and their families has a role to play. In order to fulfil this responsibility effectively, all practitioners should make sure their approach is child-centred. This means that they should consider, at all times, what is in the **best interests** of the child.

(Keeping Children Safe in Education 2020)

The LGB recognises the need to ensure that it complies with its duties under legislation and this policy has regard to statutory guidance, Keeping Children Safe in Education (KCSIE), Working Together to Safeguard Children and locally agreed inter-agency procedures put in place by Bury Integrated Safeguarding Partnership.

This policy will be reviewed annually, as a minimum, and will be made available publicly via the school website or on request.

Safeguarding and promoting the welfare of children is defined as:

- protecting children from maltreatment;
- preventing impairment of children's health or development;
- ensuring that children grow up in circumstances consistent with the provision of safe and effective care;
- taking action to enable all children to have the best outcomes.

This policy is for all staff, parents, governors, volunteers and the wider school community. It forms part of the child protection and safeguarding arrangements for our school and is one of a suite of policies and procedures which encompass the safeguarding responsibilities of the school.

This policy should be read and followed in conjunction with the school's Code of Conduct/Staff Professional Expectation Policy (including Acceptable Use of ICT), Safer Recruitment Policy, Disclosure Policy, Social Media / E-Safety Policy and Peer on Peer abuse Policy.

3. The aims of this policy are to:

- Provide staff with a framework to promote and safeguard the wellbeing of children and young people and ensure that they understand and meet their statutory responsibilities
- Ensure consistent good practice across the school.

The LGB expects that all staff will know and understand this child protection and safeguarding policy and their responsibility to implement it. Staff must, as a minimum, have read and understand Part One of KCSIE.

The LGB will ensure that arrangements are in place for all staff members to receive appropriate safeguarding and child protection training which is regularly updated.

Compliance with the policy will be monitored by the Headteacher, designated safeguarding lead (DSL) and named safeguarding board member.

4. Statutory framework

Section 175 of the Education Act 2002 in the case of maintained schools place a statutory duty on governing bodies and proprietors to have policies and procedures in place that safeguard and promote the welfare of children and young people who are pupils of the school which must have regard to any guidance given by the Secretary of State.

In Bury, all professionals including staff in schools should work in accordance with the multi-agency procedures developed by the Bury Integrated Safeguarding Partnership (BISP) which can be found on their website at:

<http://burysafeguardingpartnership.bury.gov.uk>

5. Key roles and responsibilities

The LGB has a legal responsibility to make sure that there are appropriate policies and procedures in place in order for appropriate action to be taken in a timely manner to safeguard and promote children and young people's welfare, and to monitor that the school complies with them. The LGB should also ensure that the policy is made available to parents and carers by publishing this on the school website or in writing if requested.

The LGB will ensure that the school contributes to multiagency working in line with statutory guidance Working Together to Safeguard Children and that the school's safeguarding arrangements take into account the procedures and practice of the local authority.

It is the responsibility of the LGB to ensure that staff and volunteers are properly vetted to make sure they are safe to work with the pupils who attend our school and that the school has procedures for appropriately managing allegations of abuse made against members of staff (including the headteacher and volunteer helpers) in line with the statutory guidance set out in Part 4 of KCSIE. The LGB will ensure that there is a named board member for safeguarding, a Designated Safeguarding Lead (DSL) who has lead responsibility for safeguarding and child protection, and a designated teacher to promote the educational achievement of children who are looked after or previously looked after, and will ensure that these people have the appropriate training.

The LGB will inform BISP annually about the discharge of their safeguarding duties by completing the 175 safeguarding self-assessment audit.

Designated Safeguarding Lead (DSL)

The DSL should take lead responsibility for safeguarding and child protection (including online safety). This should be explicit in the role-holder's job description. (The broad areas of responsibility and activities related to the role of the DSL are set out in Annex B of KCSIE) and the DSL will fulfil those responsibilities and carry out those activities whenever necessary. It is a matter for individual schools and colleges as to whether they choose to have one or more deputy designated safeguarding leads. Any deputies should be trained to the same standard as the designated safeguarding lead. Whilst activities can be delegated to the deputies, the ultimate lead responsibility for safeguarding and child protection remains with the designated safeguarding lead, this cannot be delegated.

The DSL will be from the school's SLT and have the appropriate status and authority to carry out the duties of the post.

The DSL and any alternate DSLs will be expected to:

- Liaise with the local authority and work with other agencies in line with Working Together to Safeguard Children.

- Be available during school hours for staff to discuss any safeguarding concerns. The DSL will make arrangements for adequate and appropriate cover arrangements for any out of hours/out of term time activities.
- Lead on liaising with other agencies and setting up inter-agency assessment where early help is appropriate
- Liaise as necessary with the Local Authority Personal Adviser appointed to support any care leavers attending the school regarding any issues of concern affecting them.
- Undergo training to provide them with the knowledge and skills to carry out the role. This training will be updated every two years.

Headteacher

The headteacher will ensure that the policies and procedures adopted by the governing body are fully implemented and that sufficient resources and time are allocated to enable staff members to discharge their safeguarding responsibilities.

All staff involved in recruiting staff or volunteers

All staff involved in recruiting staff or volunteers must read, understand and act in accordance with Part 3 of KCSIE (Safer Recruitment).

All staff

All staff have a responsibility to provide a safe environment in which children can learn.

All staff will be expected to:

- Read and ensure they understand Part One of KCSIE.
- Familiarise themselves with the systems within school which support safeguarding, including the safeguarding and child protection policy, the code of conduct/staff behaviour policy, the safeguarding response to children who go missing from education, and the role of the DSL (including the identity of the DSL and any deputies).
- To be aware of the different types of abuse and neglect so that they are able to identify cases of children who may be in need of help or protection.
- To know what to do if a child tells them he/she is being abused or neglected.
- To know of the process for making referrals to children's social care in the absence of their DSL.
- Be aware of and understand the early help procedure and their role within it. This includes providing support as soon as a problem emerges, liaising with the DSL, and sharing information with other professionals in order to support early identification and assessment, focussing on providing interventions to avoid escalation of worries and needs. In some cases, staff may be asked to act as the lead professional in undertaking an early help assessment.
- Act immediately on any concerns they have about a child's welfare.

Any child may benefit from early help, but all school and college staff should be particularly alert to the potential need for early help for a child who:

- is disabled and has specific additional needs
- has special educational needs (whether or not they have a statutory education, health and care plan
- is a young carer
- is showing signs of being drawn in to anti-social or criminal behaviour, including gang involvement and association with organised crime groups
- is frequently missing/goes missing from care or from home
- is misusing drugs or alcohol themselves

- is at risk of modern slavery, trafficking or exploitation
- is in a family circumstance presenting challenges for the child, such as substance abuse, adult mental health problems or domestic abuse
- has returned home to their family from care
- is showing early signs of abuse and/or neglect
- is at risk of being radicalised or exploited
- is a privately fostered child

Knowing what to look out for is vital to the early identification of abuse and neglect. If staff are unsure, they should always speak to the DSL (or deputy). If in exceptional circumstances the DSL (or deputy) is not available, this should not delay appropriate action being taken. Staff should consider speaking to a member of the senior leadership team and/or take advice from children's social care MASH Team: 0161 253 5678. In these circumstances, any action taken should be shared with the DSL as soon as is practically possible.

6. Training

The LGB will ensure that all staff receive appropriate safeguarding and child protection training which is regularly updated and in line with guidance from BISP. In addition, all staff members will receive regular safeguarding and child protection updates (for example, via email, ebulletins, staff meetings) as required, but at least annually, to provide them with relevant skills and knowledge to safeguard children effectively.

At least one member of any recruitment interview panel must have completed safer recruitment training.

7. All new staff

New staff members will undergo safeguarding and child protection training at induction. This will include training on the school's safeguarding and child protection policy, the code of conduct/staff professional expectations policy and the role of the designated safeguarding lead. Copies of the school's policies, procedures and Part One of KCSIE will be provided to new staff at induction.

The Headteacher will ensure that an accurate record of safeguarding training undertaken by all staff is maintained and updated regularly.

8. Recognising concerns - signs and indicators of abuse

All staff should be aware that abuse, neglect and safeguarding issues are rarely standalone events that can be covered by one definition or label. In most cases, multiple issues will overlap with one another.

Abuse is defined as a form of maltreatment of a child. Somebody may abuse or neglect a child by inflicting harm or by failing to act to prevent harm. Children may be abused in a family or in an institutional or community setting by those known to them or, more rarely, by others. Abuse can take place wholly online, or technology may be used to facilitate offline abuse. They may be abused by an adult or adults or another child or children.

Physical abuse: a form of abuse which may involve hitting, shaking, throwing, poisoning, burning or scalding, drowning, suffocating or otherwise causing physical harm to a child. Physical harm may also be caused when a parent or carer fabricates the symptoms of, or deliberately induces, illness in a child.

Emotional abuse: the persistent emotional maltreatment of a child such as to cause severe and adverse effects on the child's emotional development. It may involve conveying to a child that they are worthless or unloved, inadequate, or valued only insofar as they meet the needs of another person. It may include not giving the child opportunities to express their views, deliberately silencing them or 'making fun' of what they say or how they communicate. It may feature age or developmentally inappropriate expectations being imposed on children. These may include interactions that are beyond a child's developmental capability as well as overprotection and limitation of exploration and learning, or preventing the child participating in normal social interaction. It may involve seeing or hearing the ill-treatment of another. It may involve serious bullying (including cyberbullying), causing children frequently to feel frightened or in danger, or the exploitation or corruption of children. Some level of emotional abuse is involved in all types of maltreatment of a child, although it may occur alone.

Sexual abuse: involves forcing or enticing a child or young person to take part in sexual activities, not necessarily involving a high level of violence, whether or not the child is aware of what is happening. The activities may involve physical contact, including assault by penetration (for example rape or oral sex) or non-penetrative acts such as masturbation, kissing, rubbing and touching outside of clothing. They may also include non-contact activities, such as involving children in looking at, or in the production of, sexual images, watching sexual activities, encouraging children to behave in sexually inappropriate ways, or grooming a child in preparation for abuse (including via the internet). Sexual abuse is not solely perpetrated by adult males. Women can also commit acts of sexual abuse, as can other children. The sexual abuse of children by other children is a specific safeguarding issue in education (See section 7: Specific safeguarding issues and Appendix A KCSIE 2020)

Neglect: the persistent failure to meet a child's basic physical and/or psychological needs, likely to result in the serious impairment of the child's health or development. Neglect may occur during pregnancy as a result of maternal substance abuse. Once a child is born, neglect may involve a parent or carer failing to: provide adequate food, clothing and shelter (including exclusion from home or abandonment); protect a child from physical and emotional harm or danger; ensure adequate supervision (including the use of inadequate care-givers); or ensure access to appropriate medical care or treatment. It may also include neglect of, or unresponsiveness to, a child's basic emotional needs.

(Source Keeping Children Safe in Education)

9. Specific safeguarding issues

All staff should have an awareness of safeguarding issues that can put children at risk of harm. Behaviours linked to issues such as of drug taking, alcohol abuse, deliberately missing education and sexting (also known as youth produced sexual imagery) put children in danger.

All staff should be aware that safeguarding issues can manifest themselves via peer on peer abuse. This is most likely to include, but may not be limited to:

- bullying (including cyberbullying)
- physical abuse such as hitting, kicking, shaking, biting, hair pulling, or otherwise causing physical harm
- sexual violence and sexual harassment
- sexting (also known as youth produced sexual imagery)
- [Overview of Sexting Guidance.pdf](#); and
- initiation/hazing type violence and rituals

All staff should be clear about the school's policy and procedures with regards to peer on peer abuse.

Safeguarding incidents and/or behaviours can be associated with factors outside the school and/or can occur between children outside the school. All staff, especially the DSL (or deputy), should be considering the context within which such incidents and/or behaviours occur. Assessments of children should consider whether wider environmental factors are present in a child's life that are a threat to their safety and/or welfare. It is important that staff provide as much information as possible as part of the referral process.

Further information about specific forms of abuse and safeguarding issues can be found in Appendix A KCSIE 2020. All staff should familiarise themselves with this.

10. Peer on peer abuse

In most instances, the conduct of pupils towards each other will be covered by the behaviour policy. However, some allegations may be of such a serious nature that they may raise safeguarding concerns. The school is clear that abuse is abuse and should never be tolerated or passed off as "banter", "just having a laugh" or "part of growing up".

Peer on peer abuse can manifest itself in many ways and may include sexual violence and sexual harassment, physical abuse such as hitting, kicking, shaking, biting, hair pulling, or otherwise causing physical harm, sexting (also known as youth produced sexual imagery), initiation/hazing type violence and rituals.

Any incidents of serious peer on peer abuse will be managed according to school procedures which detail measures to minimise the risk of peer on peer abuse, how allegations of peer abuse will be recorded, investigated and dealt with, and processes for how victims, perpetrators and any other child affected by peer on peer abuse will be supported.

11. Online safety

The use of technology has become a significant component of many safeguarding issues, for example, technology often provides the platform that facilitates child sexual exploitation, radicalisation and sexual predation.

There are three categories of risk:

- **Content:** being exposed to illegal, inappropriate or harmful material, for example, pornography, fake news, racist or radical and extremist views;
- **Contact:** being exposed to harmful online interaction with other users, for example, commercial advertising as well as adults posing as children or young adults; and
- **Conduct:** personal online behaviour that increases the likelihood of, or causes, harm, for example, making, sending and receiving explicit images, or online bullying.

The governing body/proprietor has had due regard to the additional information and support set out in KCSIE and will ensure that the school has a whole school approach to online safety and has a clear policy on use of communications technology in school.

12. Curriculum

The LGB will ensure that children and young people are taught about safeguarding, including online safety, through teaching and learning opportunities as part of a broad and balanced curriculum. This is in order to help children stay safe, recognise when they do not feel safe and identify who they might or can talk to.

This may include covering relevant issues through Relationships Education and

Relationships and Sex Education (also known as Sex and Relationship Education) and through Personal, Social, Health and Economic education (PHSE).

The LGB will also ensure there is a comprehensive curriculum response to e-safety issues, enabling children and young people and their parents to learn about the risks of new technologies, communication and social media and how to use these responsibly.

The school will ensure that there are appropriate filters and monitoring systems in place to safeguard children and young people from potentially harmful and inappropriate online material.

13. Procedures

If staff notice any indicators of abuse/neglect or signs that a child or young person may be experiencing a safeguarding issue they should use the school's recording procedures for safeguarding concerns (using CPOMS) and raise with the DSL without delay.

14. What to do if you are concerned.

If a child makes an allegation or disclosure of abuse against an adult or other child or young person, it is important that you:

- Stay calm and listen carefully;
- Accept what is being said;
- Allow the child/young person to talk freely – do not interrupt or put words in the child/young person's mouth;
- Only ask questions when necessary to clarify, do not investigate or ask leading questions;
- Reassure the child, but don't make promises which it might not be possible to keep;
- Do not promise confidentiality;
- Emphasise that it was the right thing to tell someone;
- Reassure them that what has happened is not their fault;
- Do not criticise the perpetrator;
- Explain what has to be done next and who has to be told;
- Record the information onto CPOMS;
- Do not include your opinion without stating it is your opinion;
- In addition speak directly to the DSL if the issue is urgent
- Consider seeking support for yourself and discuss this with the DSL as dealing with a disclosure can be distressing.

The concern must be logged onto CPOMS. If there is an immediate risk the DSL/DDSL must also be informed in person without delay.

The DSL/DDSL will assess the concern and, taking into account any other safeguarding information known about the child/young person, consider whether it suggests that the threshold of significant harm, or risk of significant harm, has been reached at which point they will make a referral to the MASH team. If the DSL is unsure whether the threshold has been met they will contact the **MASH Team** (Weekdays 8.45am- 5pm) 0161 253 5678.

Where the DSL believes that a child or young person may be at imminent and significant harm risk of harm they should call immediately **MASH Team**

(Weekdays 8.45am- 5pm) 0161 253 5678 or **Emergency Duty Team**

(outside office hours) 0161 253 6606. If an immediate police response is required, the DSL should request police assistance via 999.

Where a safeguarding concern does not meet the threshold for social care, the DSL should record how this decision has been reached and should consider whether additional needs of the child have been identified that might be met by a coordinated offer of early help.

School staff might be required to contribute to multi-agency plans to provide additional support to children. This might include attendance at child protection conferences or core group meetings. The school is committed to providing as much relevant up to date information about the child as possible, including submitting reports for child protection conference where possible in advance of the meeting.

Where reasonably possible, the school is committed to obtaining more than one emergency contact number for each pupil.

School staff must ensure that they are aware of the procedure to follow when a child goes missing from education.

15. Information sharing, record keeping and confidentiality

Information sharing is vital in identifying and tackling all forms of abuse. As part of meeting a child's needs, the school understands that it is critical to recognise the importance of information sharing between professionals and local agencies and will contribute to multi-agency working in line with Working Together to Safeguard Children.

Where there are concerns about the safety of a child, the sharing of information in a timely and effective manner between organisations can reduce the risk of harm. Whilst the GDPR / Data Protection Act 2018 places duties on organisations and individuals to process personal information fairly and lawfully, it is not a barrier to sharing information where the failure to do so would result in a child or vulnerable adult being placed at risk of harm. Similarly, human rights concerns, such as respecting the right to a private and family life would not prevent sharing where there are real safeguarding concerns.

Well-kept records are essential to good child protection practice. All concerns, discussions and decisions made and the reasons for those decisions should be recorded in writing. If in doubt about recording requirements, staff should discuss with the DSL.

The school recognises that confidentiality should be maintained in respect of all matters relating to child protection. Information on individual child protection cases may be shared by the DSL or alternate DSL with other relevant members of staff. This will be on a 'need to know' basis and where it is in the child's best interests to do so.

A member of staff must never guarantee confidentiality to anyone about a safeguarding concern (including parents / carers or pupils), or promise a child to keep a secret which might compromise the child's safety or wellbeing.

¹The School will always undertake to share its intention to refer a child to Social Care with their parents /carers unless to do so could put the child at greater risk of harm, or impede a criminal investigation.

¹ N.B. The exception to this process will be in those cases of known FGM where there is a mandatory requirement for the teacher to report directly to the police, although the DSL should also be made aware.

16. Managing allegations made against members of staff or volunteers

An allegation is any information which indicates that a member of staff /volunteer may have:

- Behaved in a way that has harmed a child, or may have harmed a child;
- Possibly committed a criminal offence against or related to a child; or
- Behaved towards a child or children in a way that indicates he/she may pose a risk of harm to children.

This applies to any child the member of staff/volunteer has contact with in their personal, professional or community life. It also applies regardless of whether the alleged abuse took place in our school.

If any member of staff has concerns that a colleague or volunteer might pose a risk to children, it is their duty to report these to the headteacher. Where the concerns or allegations are about the headteacher, these should be referred to the Chair of the LGB.

The headteacher/Chair of LGB should report the concern to the Local Authority Designated Officer – Mark Gay 0161 253 5342, M.Gay@bury.gov.uk . All allegations must be managed in line with the statutory guidance in Part 4 of KCSIE.

17. Whistleblowing

The LGB recognises that children cannot be expected to raise concerns in an environment where staff fail to do so.

Whistleblowing is ‘making a disclosure in the public interest’ and occurs when a worker (or member of the wider school community) raises a concern about danger or illegality that affects others, for example, pupils in the school or members of the public.

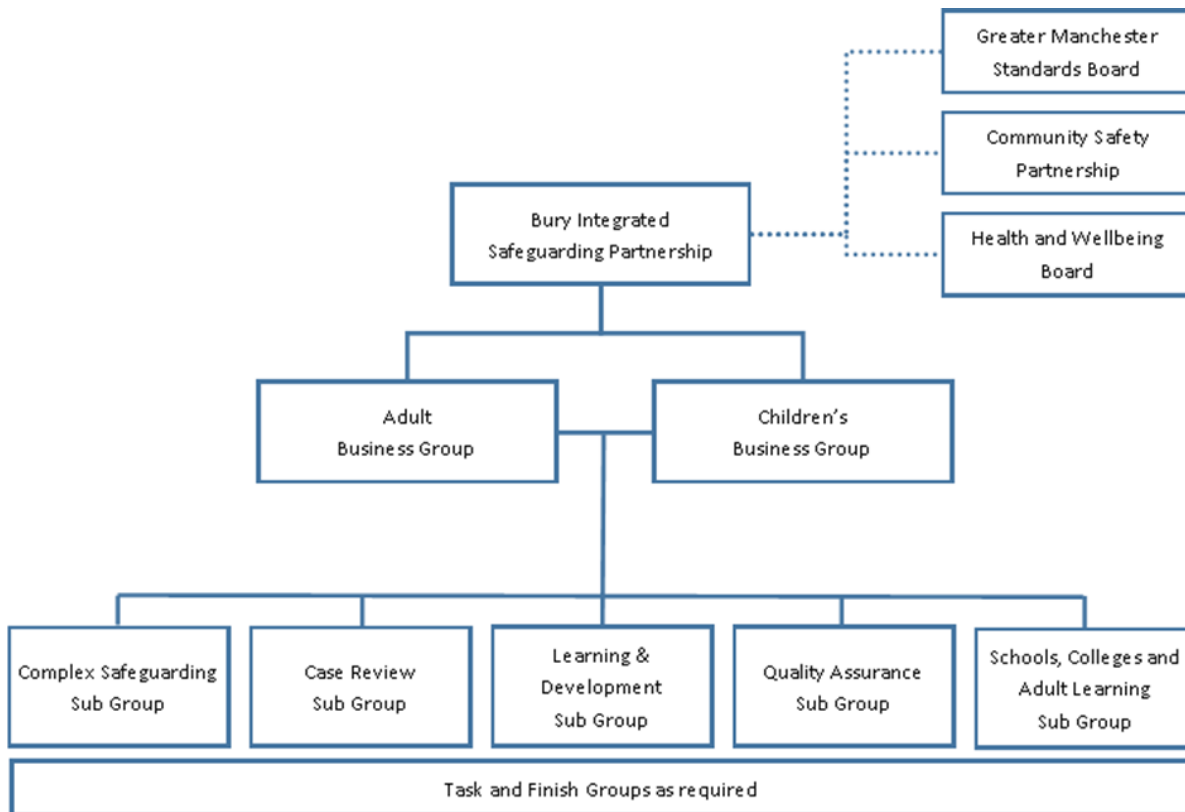
All staff should be aware of their duty to raise concerns, where they exist, about the management of child protection, which may include the attitude or actions/inactions of colleagues, poor or unsafe practice and potential failures in the school’s safeguarding arrangements.

The LGB would wish for everyone in the school community to feel able to report any child protection/safeguarding concerns through existing procedures within school, including the school’s own whistleblowing procedure.

18. Local safeguarding partnership arrangements

School has a pivotal role to play in multi-agency safeguarding arrangements. The LGB should ensure that the school contributes to multi-agency working in line with statutory guidance Working Together to Safeguard Children. It is especially important that school understands their role in the new safeguarding partner arrangements.

Bury Integrated Safeguarding Partnership Structure:



Further information can be found at :

<https://burysafeguardingpartnership.bury.gov.uk/CHttpHandler.ashx?id=20245&p=0>

19. The use of 'reasonable force' in schools and colleges

There are circumstances when it is appropriate for staff in schools and colleges to use reasonable force to safeguard children and young people. The term 'reasonable force' covers the broad range of actions used by staff that involve a degree of physical contact to control or restrain children. This can range from guiding a child to safety by the arm, to more extreme circumstances such as breaking up a fight or where a young person needs to be restrained to prevent violence or injury. 'Reasonable' in these circumstances means 'using no more force than is needed'. The use of force may involve either passive physical contact, such as standing between pupils or blocking a pupil's path, or active physical contact such as leading a pupil by the arm out of the classroom.

DFE advice for schools is available at Use of Reasonable Force in Schools.

When using reasonable force in response to risks presented by incidents involving children with SEN or disabilities or with medical conditions, schools and colleges should in considering the risks carefully recognise the additional vulnerability of these groups. They should also consider their duties under the Equality Act 2010 in relation to making reasonable adjustments, non-discrimination and their Public Sector Equality Duty.

By planning positive and proactive behaviour support, for instance through drawing up individual behaviour plans for more vulnerable children, and agreeing them with parents and carers, schools

and colleges can reduce the occurrence of challenging behaviour and the need to use reasonable force.

Appendix A

Further information on specific safeguarding issues (source: Annex A, KCSIE for full details)

Children and the court system

Children are sometimes required to give evidence in criminal courts, either for crimes committed against them or for crimes they have witnessed. There are two age appropriate guides to support children 5-11-year olds and 12-17 year olds.

The guides explain each step of the process, support and special measures that are available. There are diagrams illustrating the courtroom structure and the use of video links is explained.

Making child arrangements via the family courts following separation can be stressful and entrench conflict in families. This can be stressful for children. The Ministry of Justice has launched an online child arrangements information tool with clear and concise information on the dispute resolution service. This may be useful for some parents and carers.

Children missing from education

All staff should be aware that children going missing, particularly repeatedly, can act as a vital warning sign of a range of safeguarding possibilities. This may include abuse and neglect, which may include sexual abuse or exploitation and child criminal exploitation. It may indicate mental health problems, risk of substance abuse, risk of travelling to conflict zone, risk of female genital mutilation or risk of forced marriage. Early intervention is necessary to identify the existence of any underlying safeguarding risk and to help prevent the risks of a child going missing in future. Staff should be aware of their school or college's unauthorised absence and children missing from education procedures.

Children with family members in prison

Approximately 200,000 children in England and Wales have a parent sent to prison each year. These children are at risk of poor outcomes including poverty, stigma, isolation and poor mental health. NICCO provides information designed to support professionals working with offenders and their children, to help mitigate negative consequences for those children.

Child Criminal Exploitation (CCE)

CCE is where an individual or group takes advantage of an imbalance of power to coerce, control, manipulate or deceive a child into any criminal activity (a) in exchange for something the victim needs or wants, and/or (b) for the financial or other advantage of the perpetrator or facilitator and/or (c) through violence or the threat of violence. The victim may have been criminally exploited even if the activity appears consensual. CCE does not always involve physical contact; it can also occur through the use of technology.

CCE can include children being forced to work in cannabis factories, being coerced into moving drugs or money across the country (county lines), forced to shoplift or pickpocket, or to threaten other young people.

Some of the following can be indicators of CCE:

- children who appear with unexplained gifts or new possessions;
- children who associate with other young people involved in exploitation;
- children who suffer from changes in emotional well-being;

- children who misuse drugs and alcohol;
- children who go missing for periods of time or regularly come home late; and
- children who regularly miss school or education or do not take part in education.

Child Sexual Exploitation (CSE)

CSE occurs where an individual or group takes advantage of an imbalance of power to coerce, manipulate or deceive a child into sexual activity (a) in exchange for something the victim needs or wants, and/or (b) for the financial advantage or increased status of the perpetrator or facilitator. The victim may have been sexually exploited even if the sexual activity appears consensual. CSE does not always involve physical contact; it can also occur through the use of technology. CSE can affect any child or young person (male or female) under the age of 18 years, including 16 and 17 year olds who can legally consent to have sex. It can include both contact (penetrative and non-penetrative acts) and non-contact sexual activity and may occur without the child or young person's immediate knowledge (e.g. through others copying videos or images they have created and posted on social media).

The above CCE indicators can also be indicators of CSE, as can:

- children who have older boyfriends or girlfriends; and
- children who suffer from sexually transmitted infections or become pregnant.

The DFE provide: Child sexual exploitation: guide for practitioners

County lines

County lines is a term used to describe gangs and organised criminal networks involved in exporting illegal drugs (primarily crack cocaine and heroin) into one or more importing areas [within the UK], using dedicated mobile phone lines or other form of "deal line".

Exploitation is an integral part of the county lines offending model with children and vulnerable adults exploited to move [and store] drugs and money. Offenders will often use coercion, intimidation, violence (including sexual violence) and weapons to ensure compliance of victims. Children can be targeted and recruited into county lines in a number of locations including schools, further and higher educational institutions, pupil referral units, special educational needs schools, children's homes and care homes. Children are often recruited to move drugs and money between locations and are known to be exposed to techniques such as 'plugging', where drugs are concealed internally to avoid detection. Children can easily become trapped by this type of exploitation as county lines gangs create drug debts and can threaten serious violence and kidnap towards victims (and their families) if they attempt to leave the county lines network.

One of the ways of identifying potential involvement in county lines are missing episodes (both from home and school), when the victim may have been trafficked for the purpose of transporting drugs and a referral to the National Referral Mechanism¹⁰³ should be considered. If a child is suspected to be at risk of or involved in county lines, a safeguarding referral should be considered alongside consideration of availability of local services/third sector providers who offer support to victims of county lines exploitation.

Further information on the signs of a child's involvement in county lines is available in guidance published by the Home Office.

Domestic abuse

The cross-government definition of domestic violence and abuse is: any incident or pattern of incidents of controlling, coercive, threatening behaviour, violence or abuse between those aged 16 or over who are, or have been, intimate partners or family members regardless of gender or sexuality. The abuse can encompass, but is not limited to: psychological; physical; sexual; financial; and emotional.

All children can witness and be adversely affected by domestic abuse in the context of their home life where domestic abuse occurs between family members. Exposure to domestic abuse and/or violence can have a serious, long lasting emotional and psychological impact on children. In some cases, a child may blame themselves for the abuse or may have had to leave the family home as a result.

Operation Encompass

Operation Encompass operates in the majority of police forces across England. It helps police and schools work together to provide emotional and practical help to children. The system ensures that when police are called to an incident of domestic abuse, where there are children in the household who have experienced the domestic incident, the police will inform the key adult (usually the designated safeguarding lead) in school before the child or children arrive at school the following day. This ensures that the school has up to date relevant information about the child's circumstances and can enable support to be given to the child according to their needs. Police forces not signed up to operation encompass will have their own arrangements in place.

National Domestic Abuse Helpline

Refuge runs the National Domestic Abuse Helpline, which can be called free of charge and in confidence, 24 hours a day on 0808 2000 247. Its website provides guidance and support for potential victims, as well as those who are worried about friends and loved ones. It also has a form through which a safe time from the team for a call can be booked.

Additional advice on identifying children who are affected by domestic abuse and how they can be helped is available at:

- NSPCC- UK domestic-abuse Signs Symptoms Effects
- Refuge what is domestic violence/effects of domestic violence on children
- SafeLives: young people and domestic abuse.

Homelessness

Being homeless or being at risk of becoming homeless presents a real risk to a child's welfare. The designated safeguarding lead (and any deputies) should be aware of contact details and referral routes in to the Local Housing Authority so they can raise/progress concerns at the earliest opportunity. Indicators that a family may be at risk of homelessness include household debt, rent arrears, domestic abuse and anti-social behaviour, as well as the family being asked to leave a property. Whilst referrals and/or discussion with the Local Housing Authority should be progressed as appropriate, and in accordance with local procedures, this does not, and should not, replace a referral into children's social care where a child has been harmed or is at risk of harm.

The Homelessness Reduction Act 2017 places a new legal duty on English councils so that everyone who is homeless or at risk of homelessness will have access to meaningful help including an assessment of their needs and circumstances, the development of a personalised housing plan, and work to help them retain their accommodation or find a new place to live. The following factsheets usefully summarise the new duties: Homeless Reduction Act Factsheets. The new duties shift focus

to early intervention and encourage those at risk to seek support as soon as possible, before they are facing a homelessness crisis.

In most cases school and college staff will be considering homelessness in the context of children who live with their families, and intervention will be on that basis. However, it should also be recognised in some cases 16 and 17 year olds could be living independently from their parents or guardians, for example through their exclusion from the family home, and will require a different level of intervention and support. Children's services will be the lead agency for these young people and the designated safeguarding lead (or a deputy) should ensure appropriate referrals are made based on the child's circumstances. The department and the Ministry of Housing, Communities and Local Government have published joint statutory guidance on the provision of accommodation for 16 and 17 year olds who may be homeless and/or require accommodation.

So-called 'honour-based' abuse (including Female Genital Mutilation and Forced Marriage)

So-called 'honour-based' abuse (HBA) encompasses incidents or crimes which have been committed to protect or defend the honour of the family and/or the community, including female genital mutilation (FGM), forced marriage, and practices such as breast ironing. Abuse committed in the context of preserving "honour" often involves a wider network of family or community pressure and can include multiple perpetrators. It is important to be aware of this dynamic and additional risk factors when deciding what form of safeguarding action to take. All forms of HBA are abuse (regardless of the motivation) and should be handled and escalated as such. Professionals in all agencies, and individuals and groups in relevant communities, need to be alert to the possibility of a child being at risk of HBA, or already having suffered HBA.

Actions

If staff have a concern regarding a child that might be at risk of HBA or who has suffered from HBA, they should speak to the designated safeguarding lead (or deputy). As appropriate, they will activate local safeguarding procedures, using existing national and local protocols for multi-agency liaison with police and children's social care. Where FGM has taken place, since 31 October 2015 there has been a mandatory reporting duty placed on teachers that requires a different approach (see following section).

FGM

FGM comprises all procedures involving partial or total removal of the external female genitalia or other injury to the female genital organs. It is illegal in the UK and a form of child abuse with long-lasting harmful consequences.

FGM mandatory reporting duty for teachers

Section 5B of the Female Genital Mutilation Act 2003 (as inserted by section 74 of the Serious Crime Act 2015) places a statutory duty upon teachers along with regulated health and social care professionals in England and Wales, to report to the police where they discover (either through disclosure by the victim or visual evidence) that FGM appears to have been carried out on a girl under 18. Those failing to report such cases may face disciplinary sanctions. It will be rare for teachers to see visual evidence, and they should not be examining pupils or students, but the same definition of what is meant by "to discover that an act of FGM appears to have been carried out" is used for all professionals to whom this mandatory reporting duty applies. Information on when and how to make a report can be found at: [Mandatory reporting of female genital mutilation procedural information](#)

Teachers must personally report to the police cases where they discover that an act of FGM appears to have been carried out.¹⁰⁵ Unless the teacher has good reason not to, they should still consider and discuss any such case with the school's or college's designated safeguarding lead (or deputy) and involve children's social care as appropriate. The duty does not apply in relation to at risk or suspected cases (i.e. where the teacher does not discover that an act of FGM appears to have been carried out, either through disclosure by the victim or visual evidence) or in cases where the woman is 18 or over. In these cases, teachers should follow local safeguarding procedures. The following is a useful summary of the FGM mandatory reporting duty: FGM Fact Sheet.

Forced marriage

Forcing a person into a marriage is a crime in England and Wales. A forced marriage is one entered into without the full and free consent of one or both parties and where violence, threats or any other form of coercion is used to cause a person to enter into a marriage. Threats can be physical or emotional and psychological. A lack of full and free consent can be where a person does not consent or where they cannot consent (if they have learning disabilities, for example). Nevertheless, some perpetrators use perceived cultural practices as a way to coerce a person into marriage. Schools and colleges can play an important role in safeguarding children from forced marriage.

The Forced Marriage Unit has published statutory guidance and Multi-agency guidelines, pages 35-36 of which focus on the role of schools and colleges. School and college staff can contact the Forced Marriage Unit if they need advice or information: Contact: 020 7008 0151 or email fmufco.gov.uk.

Preventing radicalisation

Children are vulnerable to extremist ideology and radicalisation. Similar to protecting children from other forms of harms and abuse, protecting children from this risk should be a part of a schools' or colleges' safeguarding approach.

- Extremism is the vocal or active opposition to our fundamental values, including democracy, the rule of law, individual liberty and the mutual respect and tolerance of different faiths and beliefs. This also includes calling for the death of members of the armed forces.
- Radicalisation refers to the process by which a person comes to support terrorism and extremist ideologies associated with terrorist groups.
- Terrorism is an action that endangers or causes serious violence to a person/people; causes serious damage to property; or seriously interferes or disrupts an electronic system. The use or threat must be designed to influence the government or to intimidate the public and is made for the purpose of advancing a political, religious or ideological cause.

There is no single way of identifying whether a child is likely to be susceptible to an extremist ideology. Background factors combined with specific influences such as family and friends may contribute to a child's vulnerability. Similarly, radicalisation can occur through many different methods (such as social media or the internet) and settings (such as within the home).

However, it is possible to protect vulnerable people from extremist ideology and intervene to prevent those at risk of radicalisation being radicalised. As with other safeguarding risks, staff should be alert to changes in children's behaviour, which could indicate that they may be in need of help or protection. Staff should use their judgement in identifying children who might be at risk of radicalisation and act proportionately which may include the designated safeguarding lead (or deputy) making a Prevent referral.

The school's or college's designated safeguarding lead (and any deputies) should be aware of local procedures for making a Prevent referral.

The Prevent duty

All schools and colleges are subject to a duty under section 26 of the CounterTerrorism and Security Act 2015 (the CTSA 2015), in the exercise of their functions, to have "due regard¹⁰⁹ to the need to prevent people from being drawn into terrorism". This duty is known as the Prevent duty.

The Prevent duty should be seen as part of schools' and colleges' wider safeguarding obligations. Designated safeguarding leads and other senior leaders should familiarise themselves with the revised Prevent duty guidance: for England and Wales, especially paragraphs 57-76, which are specifically concerned with schools (and also covers childcare). The guidance is set out in terms of four general themes: risk assessment, working in partnership, staff training, and IT policies.

There is additional guidance: Prevent duty guidance: for further education institutions in England and Wales that applies to colleges.

Channel

Channel is a voluntary, confidential support programme which focuses on providing support at an early stage to people who are identified as being vulnerable to being drawn into terrorism. Prevent referrals may be passed to a multi-agency Channel panel, which will discuss the individual referred to determine whether they are vulnerable to being drawn into terrorism and consider the appropriate support required. A representative from the school or college may be asked to attend the Channel panel to help with this assessment. An individual's engagement with the programme is entirely voluntary at all stages.

Guidance on Channel is available at: [Channel guidance](#).

Peer on peer/ child on child abuse

Children can abuse other children. This is generally referred to as peer on peer abuse and can take many forms. This can include (but is not limited to): abuse within intimate partner relationships; bullying (including cyberbullying); sexual violence and sexual harassment; physical abuse such as hitting, kicking, shaking, biting, hair pulling, or otherwise causing physical harm; sexting and initiation/hazing type violence and rituals.

Sexual violence and sexual harassment between children in schools and colleges

Context Sexual violence and sexual harassment can occur between two children of any age and sex. It can also occur through a group of children sexually assaulting or sexually harassing a single child or group of children.

Children who are victims of sexual violence and sexual harassment will likely find the experience stressful and distressing. This will, in all likelihood, adversely affect their educational attainment. Sexual violence and sexual harassment exist on a continuum and may overlap, they can occur online and offline (both physical and verbal) and are never acceptable. It is important that all victims are taken seriously and offered appropriate support. Staff should be aware that some groups are potentially more at risk. Evidence shows girls, children with SEND and LGBT children are at greater risk. Staff should be aware of the importance of:

- making clear that sexual violence and sexual harassment is not acceptable, will never be tolerated and is not an inevitable part of growing up;

- not tolerating or dismissing sexual violence or sexual harassment as “banter”, “part of growing up”, “just having a laugh” or “boys being boys”; and
- challenging behaviours (potentially criminal in nature), such as grabbing bottoms, breasts and genitalia, flicking bras and lifting up skirts.

Dismissing or tolerating such behaviours risks normalising them.

What is sexual violence and sexual harassment?

Sexual violence

It is important that school and college staff are aware of sexual violence and the fact children can, and sometimes do, abuse their peers in this way. When referring to sexual violence we are referring to sexual violence offences under the Sexual Offences Act 2003¹¹¹ as described below:

Rape: A person (A) commits an offence of rape if: he intentionally penetrates the vagina, anus or mouth of another person (B) with his penis, B does not consent to the penetration and A does not reasonably believe that B consents.

Assault by Penetration: A person (A) commits an offence if: s/he intentionally penetrates the vagina or anus of another person (B) with a part of her/his body or anything else, the penetration is sexual, B does not consent to the penetration and A does not reasonably believe that B consents.

Sexual Assault: A person (A) commits an offence of sexual assault if: s/he intentionally touches another person (B), the touching is sexual, B does not consent to the touching and A does not reasonably believe that B consents.

What is consent?

Consent is about having the freedom and capacity to choose. Consent to sexual activity may be given to one sort of sexual activity but not another, e.g. to vaginal but not anal sex or penetration with conditions, such as wearing a condom. Consent can be withdrawn at any time during sexual activity and each time activity occurs. Someone consents to vaginal, anal or oral penetration only if s/he agrees by choice to that penetration and has the freedom and capacity to make that choice.

Sexual harassment

When referring to sexual harassment we mean ‘unwanted conduct of a sexual nature’ that can occur online and offline. When we reference sexual harassment, we do so in the context of child on child sexual harassment. Sexual harassment is likely to: violate a child’s dignity, and/or make them feel intimidated, degraded or humiliated and/or create a hostile, offensive or sexualised environment.

Whilst not intended to be an exhaustive list, sexual harassment can include:

- sexual comments, such as: telling sexual stories, making lewd comments, making sexual remarks about clothes and appearance and calling someone sexualised names;
- sexual “jokes” or taunting;
- physical behaviour, such as: deliberately brushing against someone, interfering with someone’s clothes (schools and colleges should be considering when any of this crosses a line into sexual violence - it is important to talk to and consider the experience of the victim) and displaying pictures, photos or drawings of a sexual nature; and
- online sexual harassment. This may be standalone, or part of a wider pattern of sexual harassment and/or sexual violence. It may include:
 - non-consensual sharing of sexual images and videos;
 - sexualised online bullying;
 - unwanted sexual comments and messages, including, on social media;

- sexual exploitation; coercion and threats; and
- upskirting.

Upskirting

The Voyeurism (Offences) Act, which is commonly known as the Upskirting Act, came into force on 12 April 2019. 'Upskirting' is where someone takes a picture under a person's clothing (not necessarily a skirt) without their permission and/or knowledge, with the intention of viewing their genitals or buttocks (with or without underwear) to obtain sexual gratification, or cause the victim humiliation, distress or alarm. It is a criminal offence. Anyone of any gender, can be a victim.

The response to a report of sexual violence or sexual harassment

The initial response to a report from a child is important. It is essential that all victims are reassured that they are being taken seriously and that they will be supported and kept safe. A victim should never be given the impression that they are creating a problem by reporting sexual violence or sexual harassment. Nor should a victim ever be made to feel ashamed for making a report.

If staff have a concern about a child or a child makes a report to them, they should follow the referral process as set out from paragraph 41 in Part one of KCSIE. As is always the case, if staff are in any doubt as to what to do they should speak to the designated safeguarding lead (or a deputy).